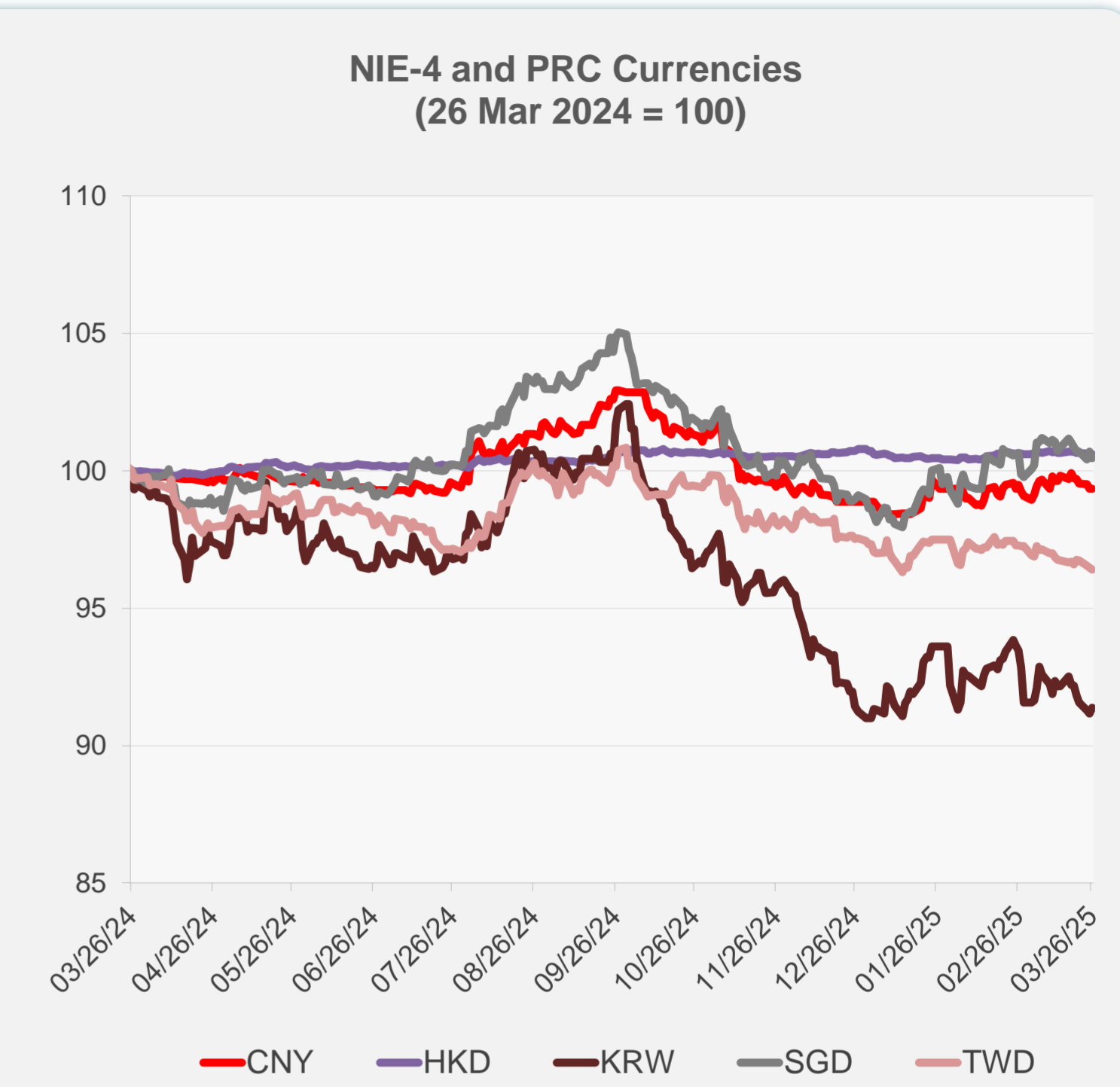
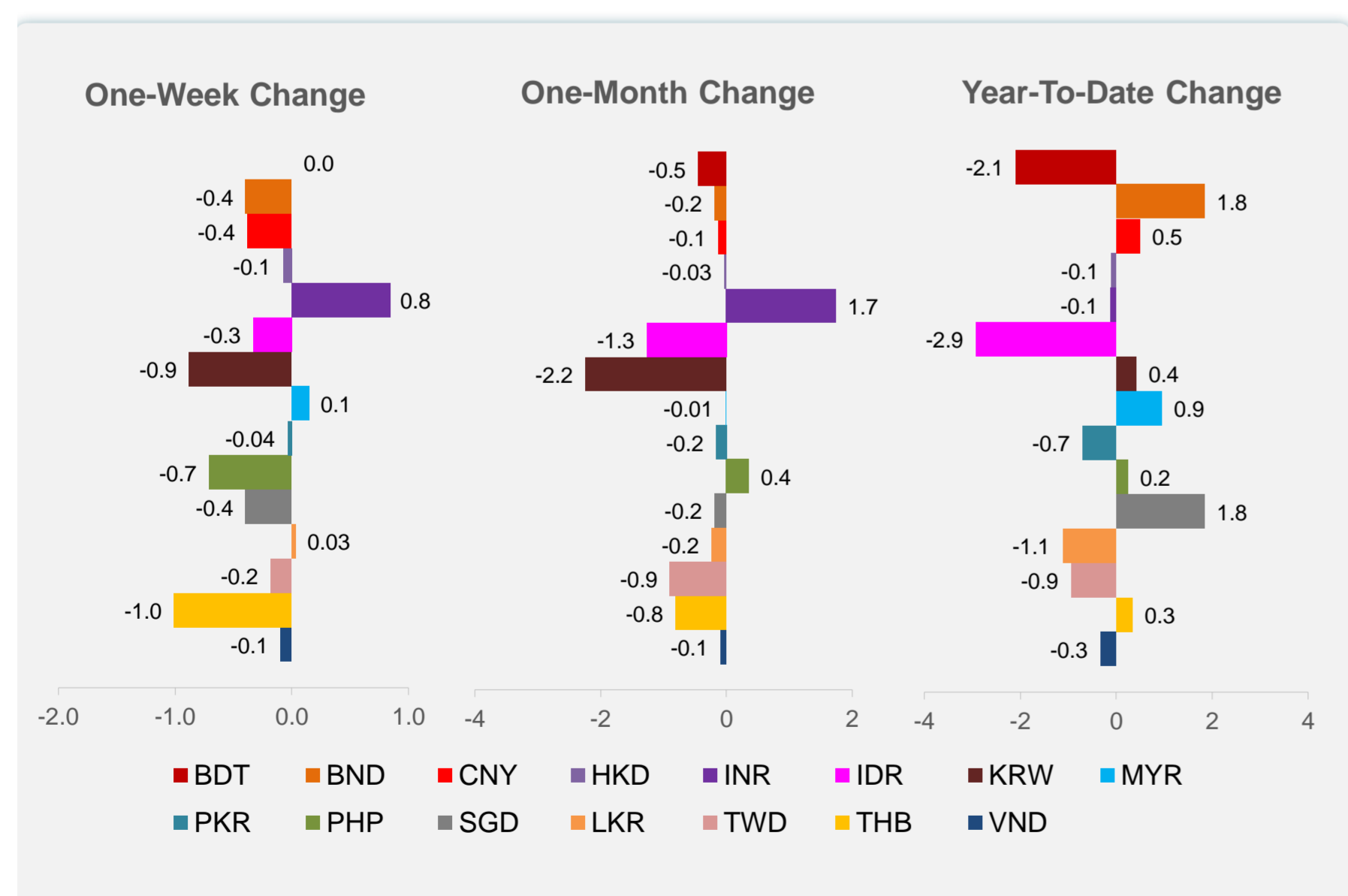
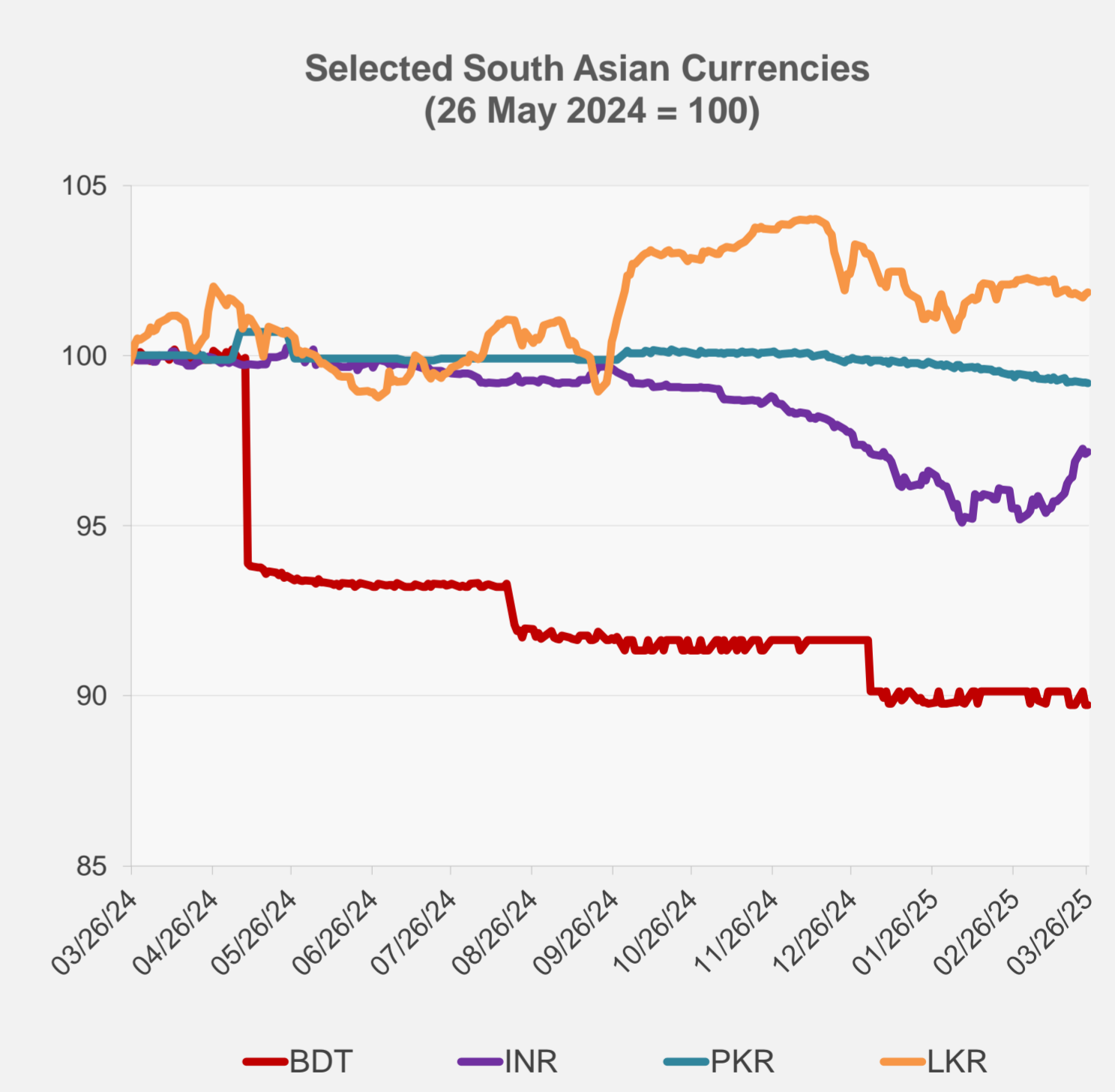
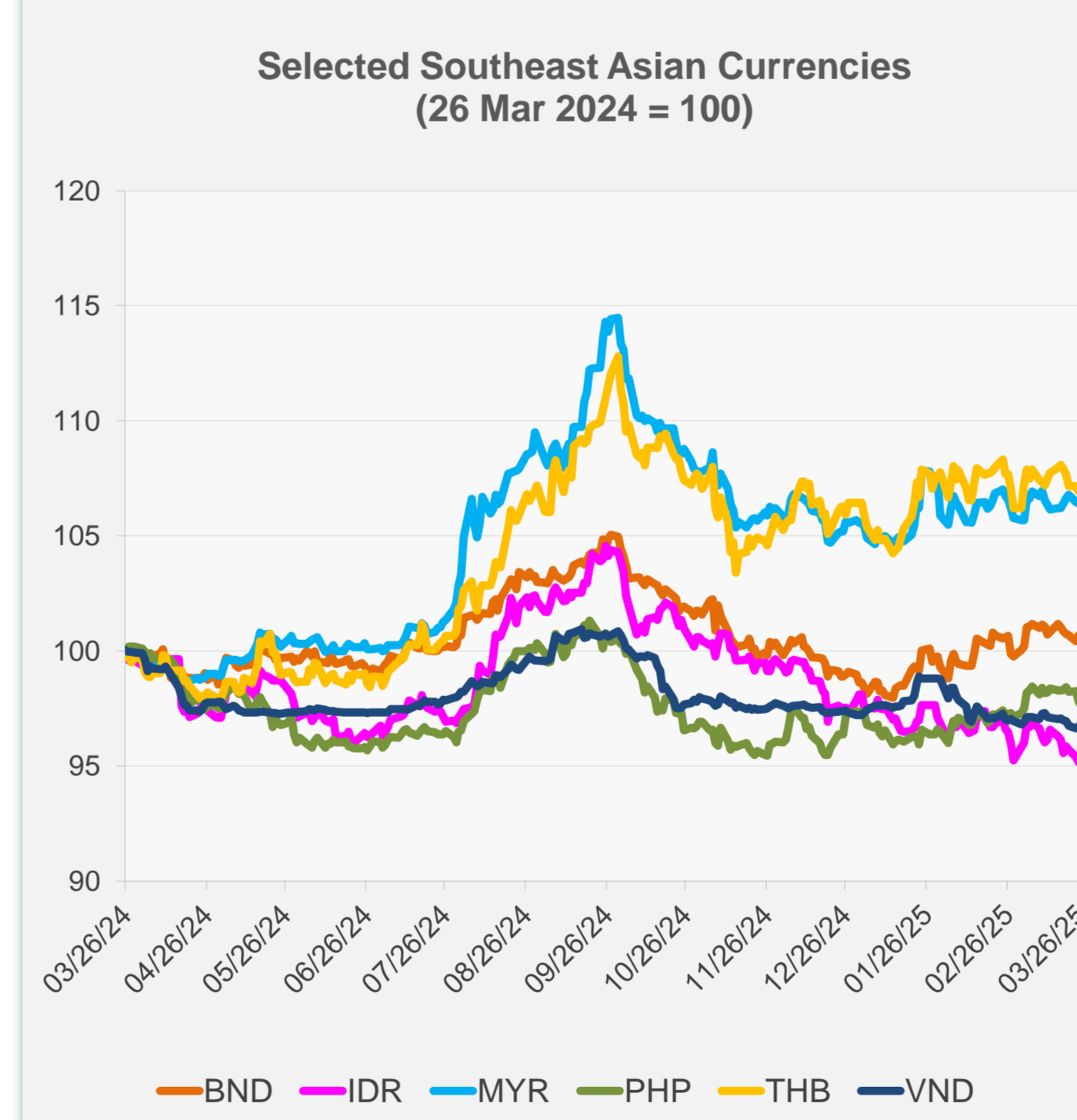


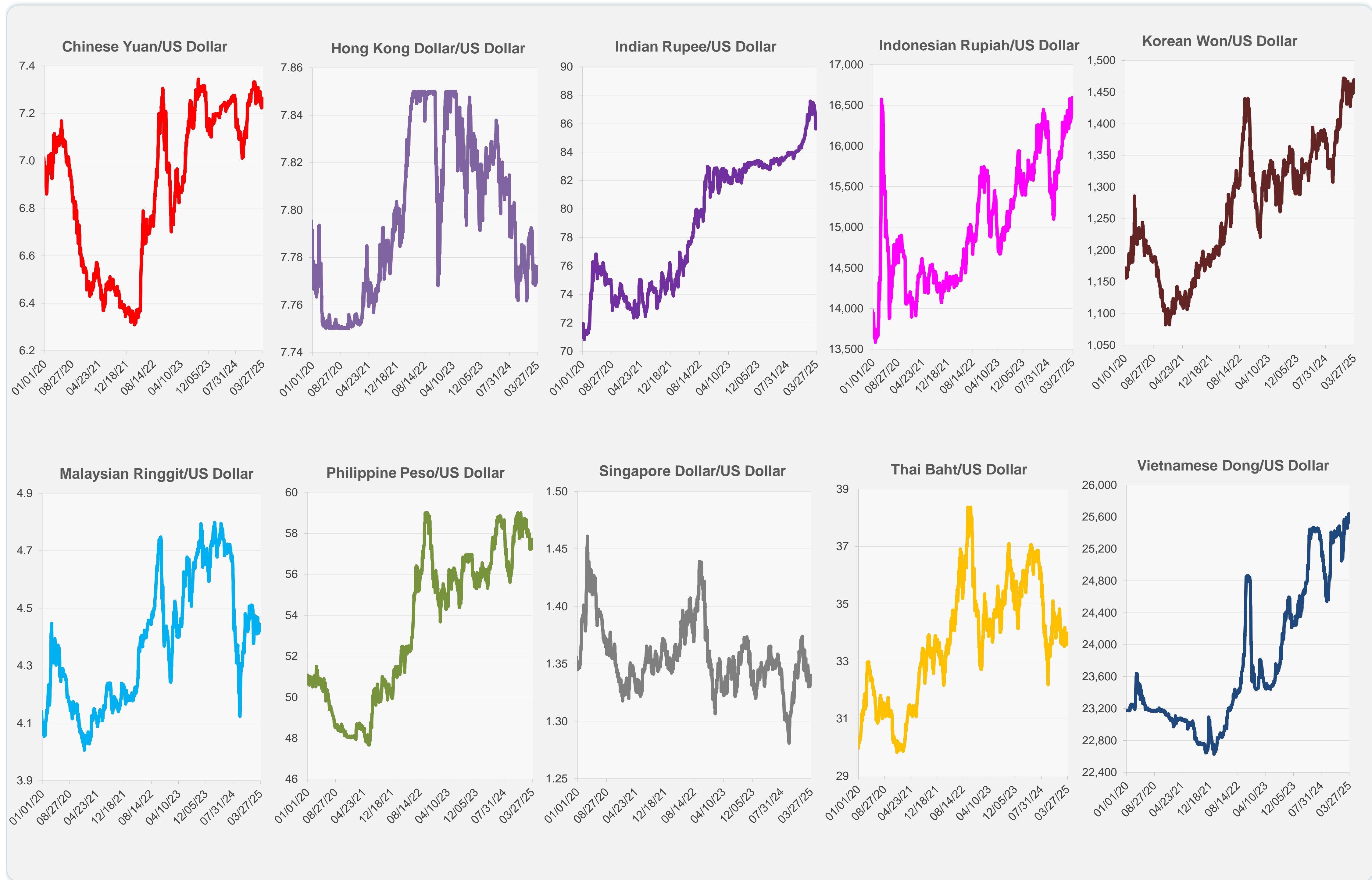
|                              | Latest Closing | % change from Previous Day | % change from 01-Jan-25 |
|------------------------------|----------------|----------------------------|-------------------------|
| Euro                         | 0.93           | -0.17                      | 4.12                    |
| Japanese yen (JPY)           | 150.66         | -0.59                      | 4.32                    |
| Bangladeshi taka (BDT)       | 122.05         | 0.00                       | -2.09                   |
| Brunei dollar (BND)          | 1.34           | -0.23                      | 1.84                    |
| Chinese yuan (CNY)           | 7.26           | 0.00                       | 0.49                    |
| Hong Kong dollar (HKD)       | 7.78           | -0.02                      | -0.10                   |
| Indian rupee (INR)           | 85.72          | 0.06                       | -0.12                   |
| Indonesian rupiah (IDR)      | 16,580.00      | 0.09                       | -2.93                   |
| Korean won (KRW)             | 1,466.00       | 0.23                       | 0.42                    |
| Malaysian ringgit (MYR)      | 4.43           | 0.15                       | 0.95                    |
| Pakistan rupee (PKR)         | 280.35         | -0.02                      | -0.70                   |
| Philippine peso (PHP)        | 57.71          | -0.18                      | 0.24                    |
| Singapore dollar (SGD)       | 1.34           | -0.23                      | 1.84                    |
| Sri Lanka rupee (LKR)        | 296.31         | 0.06                       | -1.12                   |
| Taipei,China NT dollar (TWD) | 33.10          | -0.06                      | -0.94                   |
| Thai baht (THB)              | 33.98          | -0.11                      | 0.34                    |
| Vietnamese dong (VND)        | 25,570.00      | 0.20                       | -0.33                   |



NIE = Newly Industrialized Economies



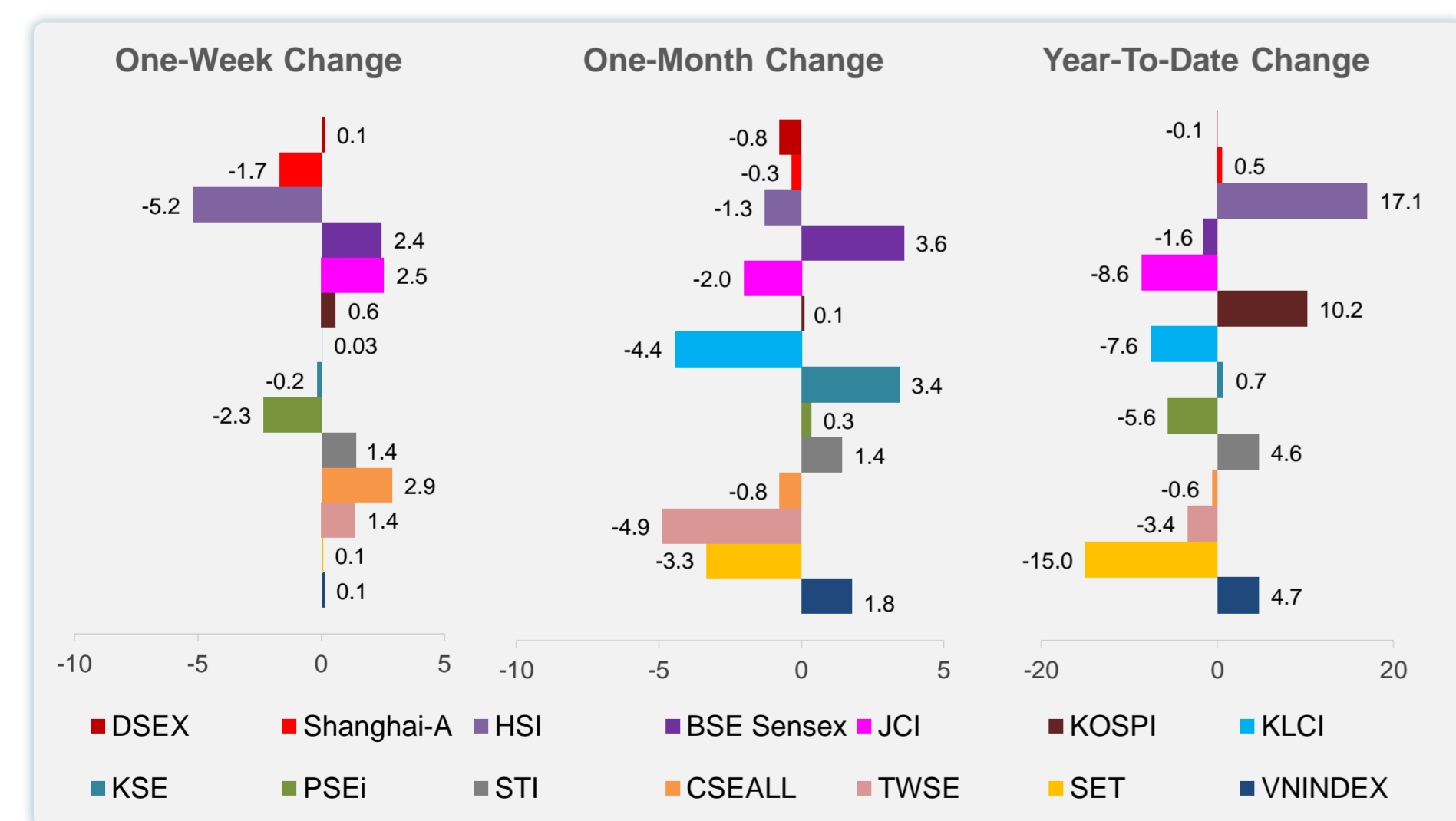
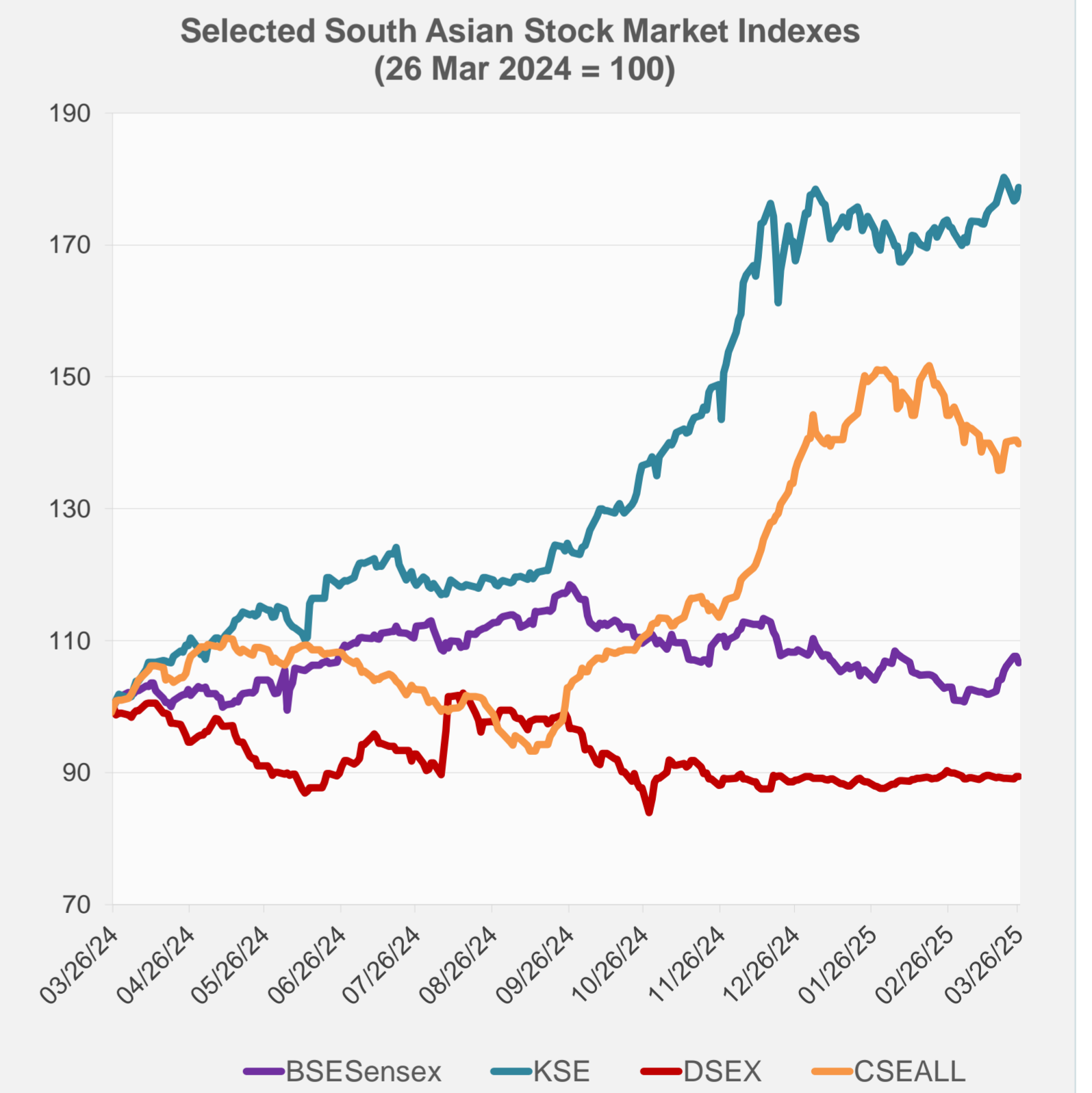
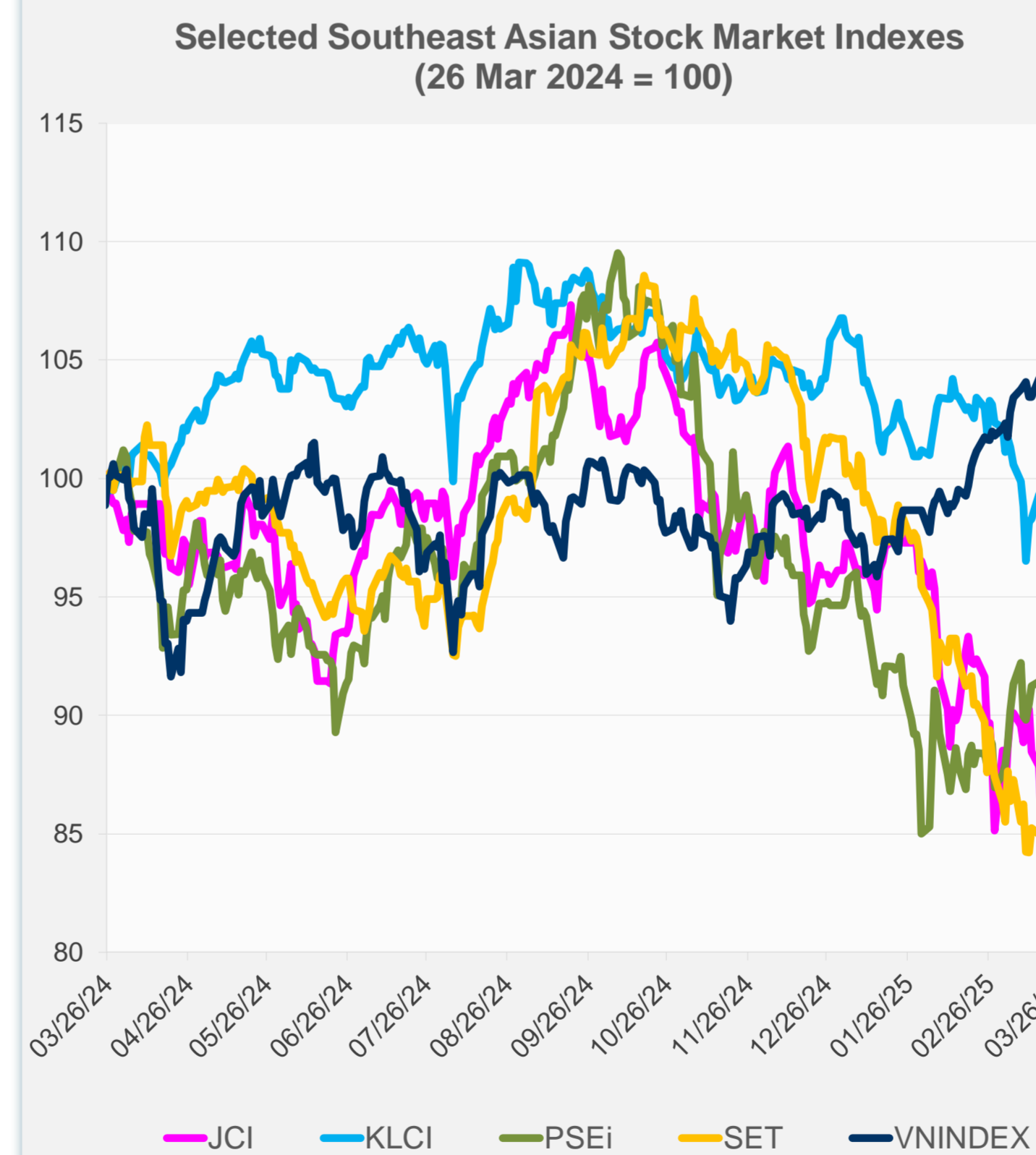
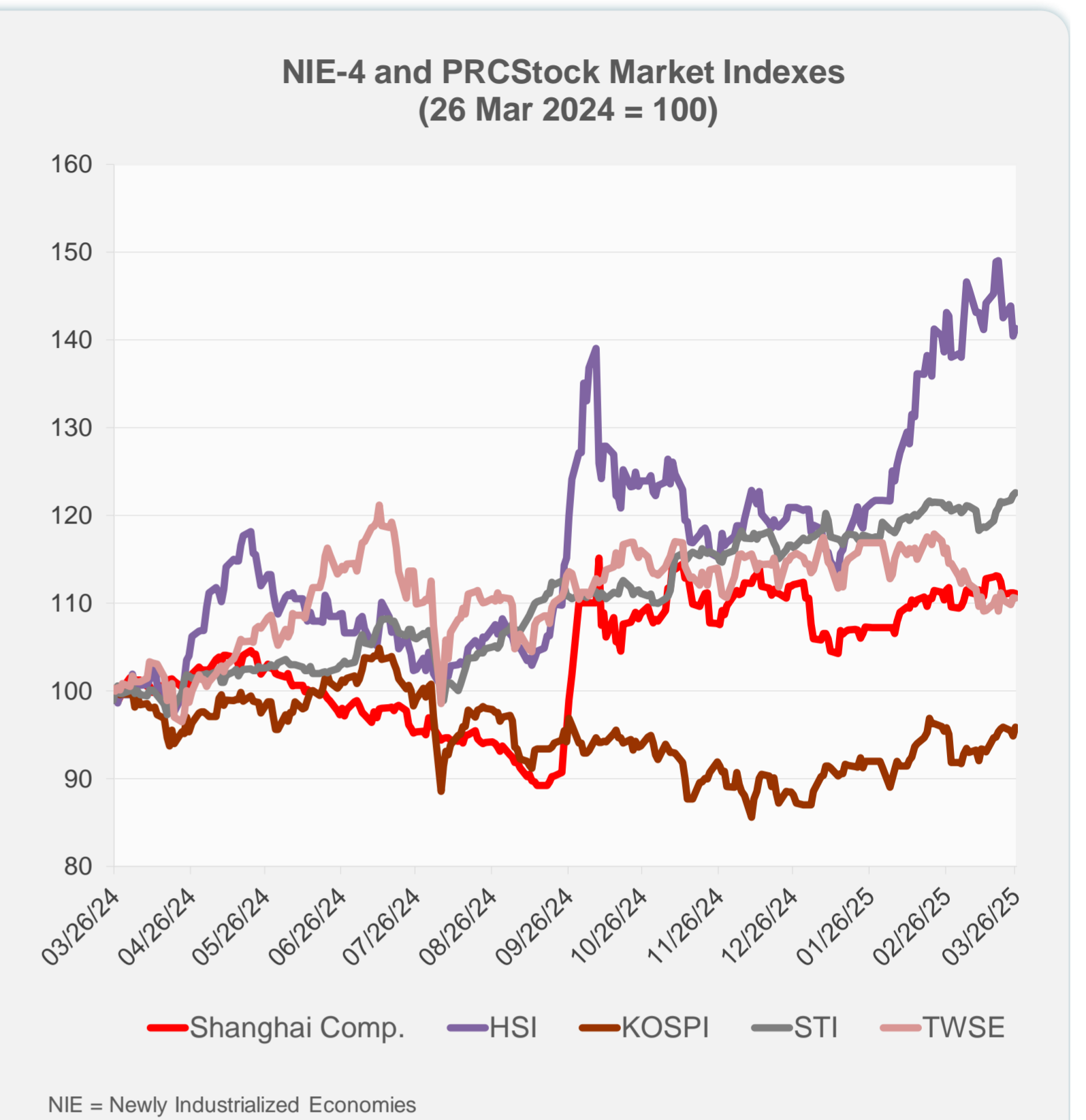
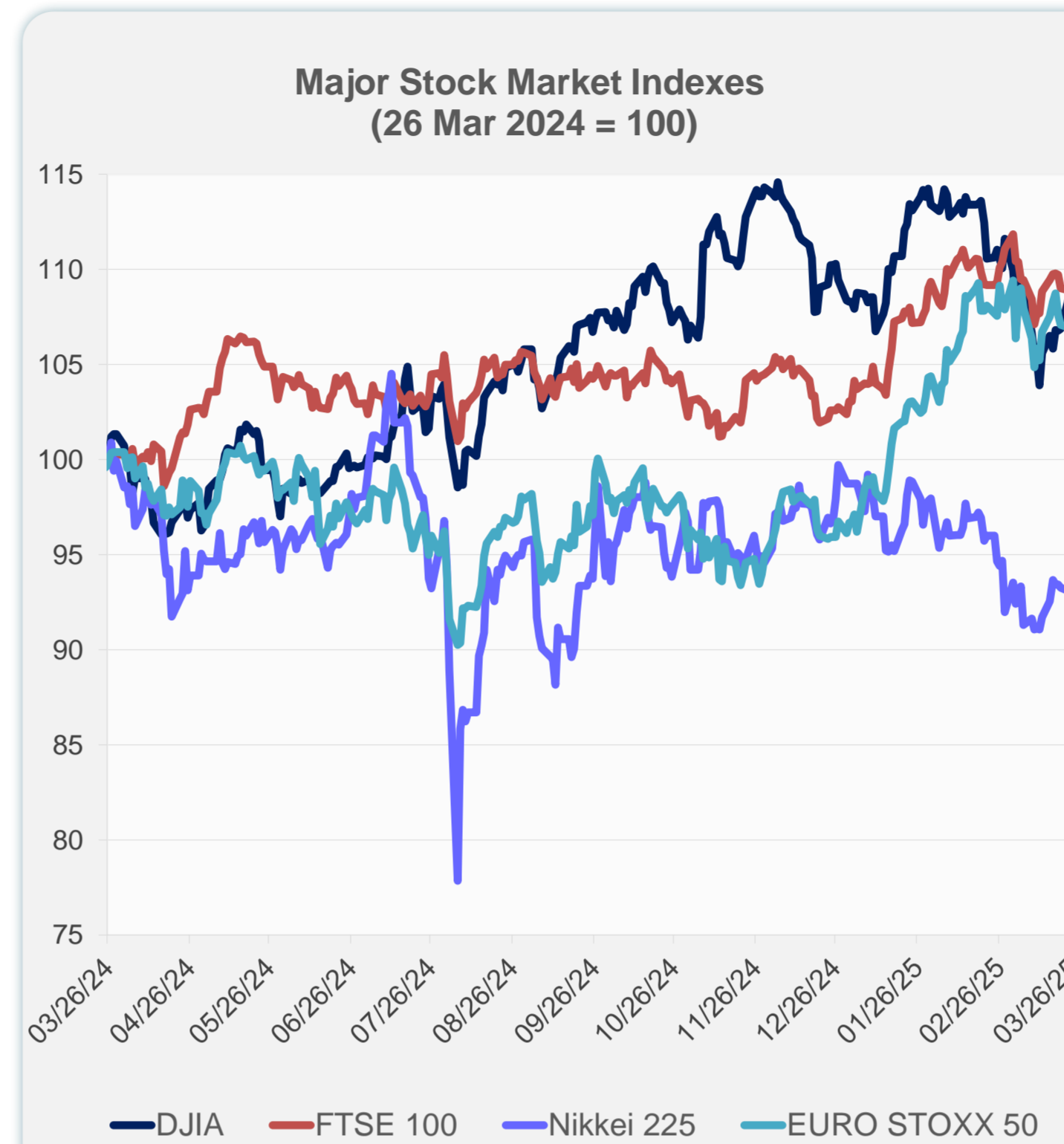
Note: Negative/Decreasing values indicate depreciation of local currency, and positive/increasing values indicate appreciation.  
Source: ADB calculations using data from Haver Analytics.



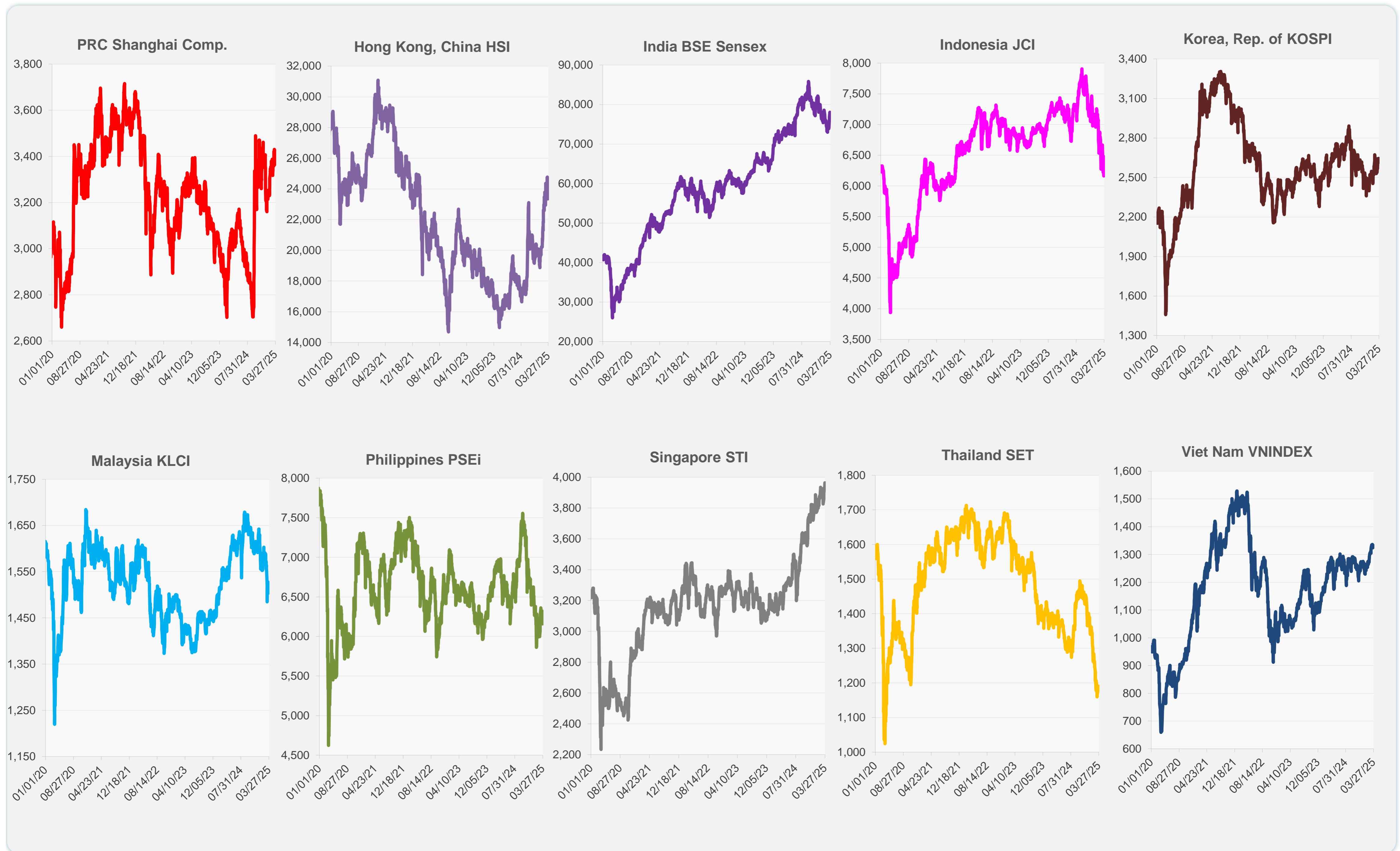
Source: Haver Analytics.

Daily Market Watch  
**STOCK INDEXES**

|                      | Latest Closing | % change from Previous Day | % change from 01-Jan-25 |
|----------------------|----------------|----------------------------|-------------------------|
| US Dow Jones Ind Avg | 42,454.79      | -0.31                      | -0.21                   |
| US NASDAQ            | 17,899.02      | -2.04                      | -7.31                   |
| US S&P 500           | 5,712.20       | -1.12                      | -2.88                   |
| UK FTSE 100          | 8,689.59       | 0.30                       | 6.32                    |
| EURO STOXX 50        | 5,411.69       | -1.16                      | 10.53                   |
| Japan NIKKEI 225     | 38,027.29      | 0.65                       | -4.68                   |
| Bangladesh DSEX      | 5,214.21       | 0.00                       | -0.08                   |
| PRC Shanghai Comp.   | 3,368.70       | -0.04                      | 0.51                    |
| Hong Kong, China HSI | 23,483.32      | 0.60                       | 17.07                   |
| India BSE Sensex     | 77,288.50      | -0.93                      | -1.55                   |
| Indonesia JCI        | 6,472.36       | 3.80                       | -8.58                   |
| Korea, Rep. of KOSPI | 2,643.94       | 1.08                       | 10.19                   |
| Malaysia KLCI        | 1,518.05       | 0.29                       | -7.57                   |
| Pakistan KSE 100     | 117,772.31     | 0.98                       | 0.65                    |
| Philippines PSEi     | 6,166.05       | 0.10                       | -5.56                   |
| Singapore STI        | 3,963.71       | 0.23                       | 4.65                    |
| Sri Lanka CSEALL     | 15,847.80      | -0.38                      | -0.61                   |
| Taipei, China TWSE   | 22,260.29      | -0.06                      | -3.36                   |
| Thailand SET         | 1,190.36       | 0.46                       | -14.99                  |
| Viet Nam VNINDEX     | 1,326.09       | -0.44                      | 4.68                    |



Sources: ADB calculations using data from CEIC Data Company and Haver Analytics.



Sources: CEIC Data Company and Haver Analytics.

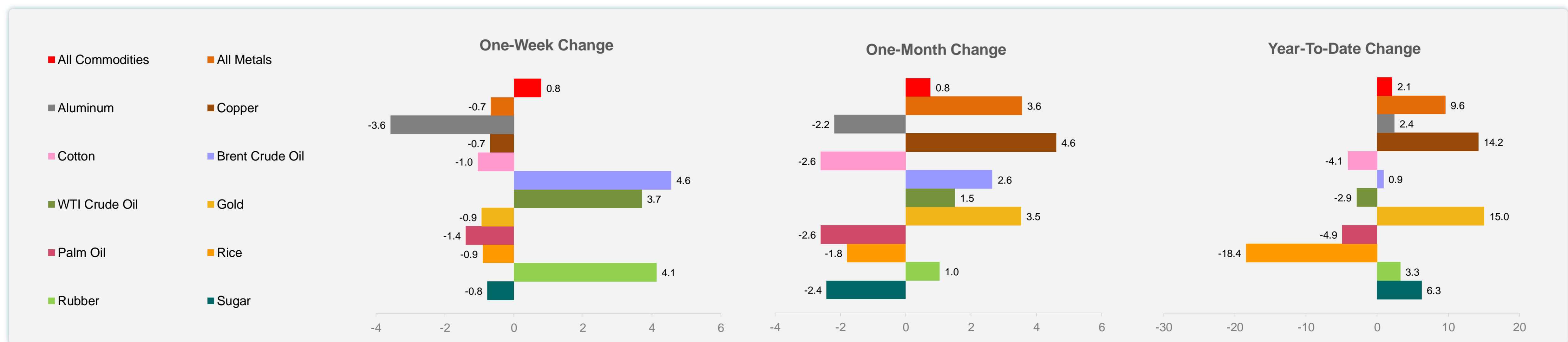
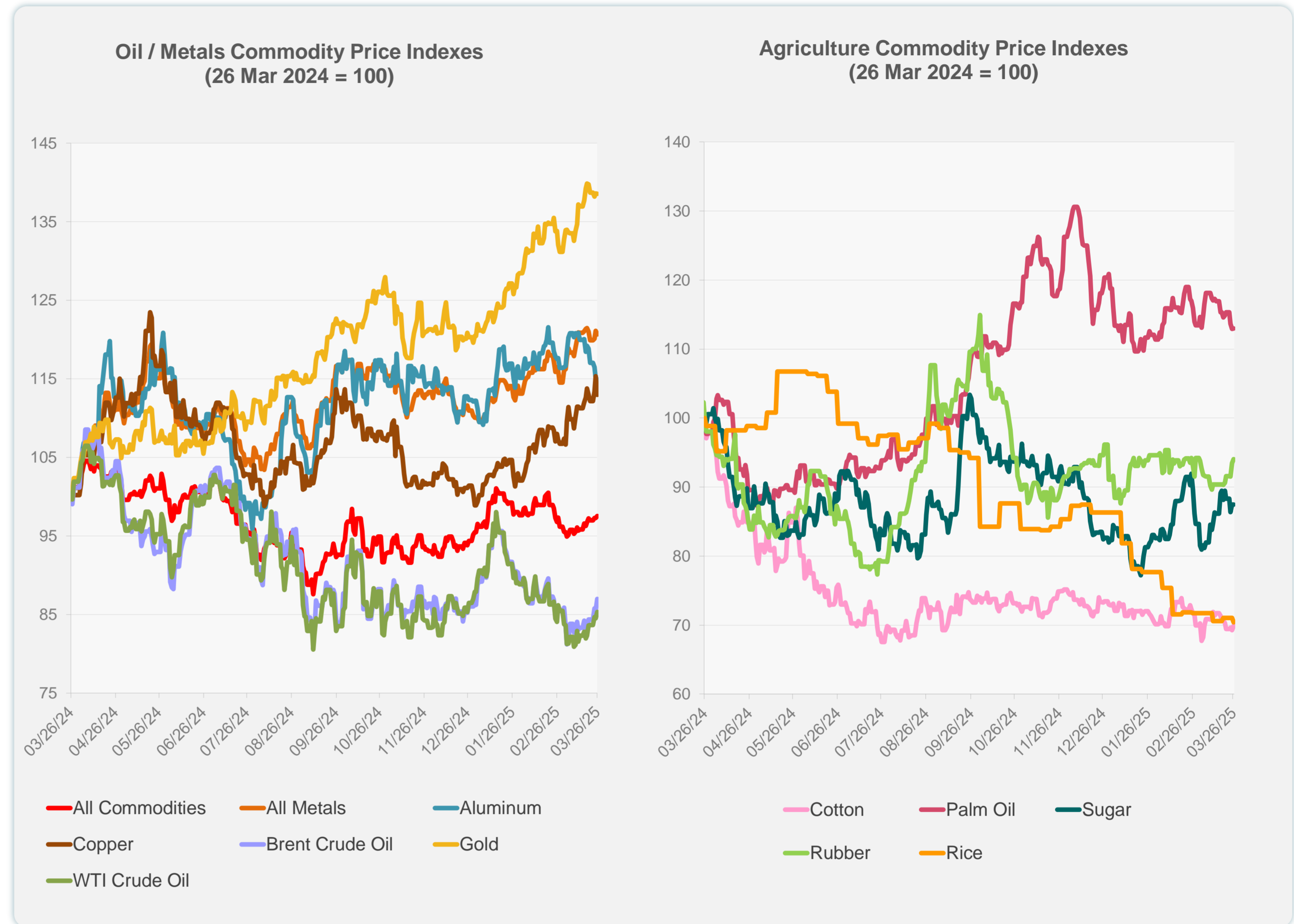
Daily Market Watch  
**COMMODITY PRICES**

27 March 2025, 9:00 AM Manila

|                     | Unit              | Latest Closing | % change from Previous Day | % change from 01-Jan-25 |
|---------------------|-------------------|----------------|----------------------------|-------------------------|
| S&P All Commodities | US\$              | 561.29         | 0.22                       | 2.12                    |
| S&P All Metals      | US\$              | 336.90         | -0.38                      | 9.61                    |
| Aluminum            | US\$/metric ton   | 2,588.48       | -0.06                      | 2.44                    |
| Copper              | US\$/metric ton   | 9,883.22       | -2.06                      | 14.22                   |
| Cotton              | US cents/lb       | 63.18          | 0.86                       | -4.13                   |
| Brent Crude Oil     | US\$/barrel       | 74.76          | 1.68                       | 0.88                    |
| WTI Crude Oil       | US\$/barrel       | 69.65          | 0.94                       | -2.89                   |
| Gold                | US\$/troy oz      | 3,019.38       | -0.02                      | 15.05                   |
| Palm Oil            | US\$/metric tonne | 1,046.17       | 0.05                       | -4.90                   |
| Rice <sup>1</sup>   | US\$/metric ton   | 438.00         | -0.90                      | -18.44                  |
| Rubber <sup>2</sup> | US\$/kg           | 244.50         | 0.62                       | 3.25                    |
| Sugar               | US cents/lb       | 19.34          | 0.00                       | 6.26                    |

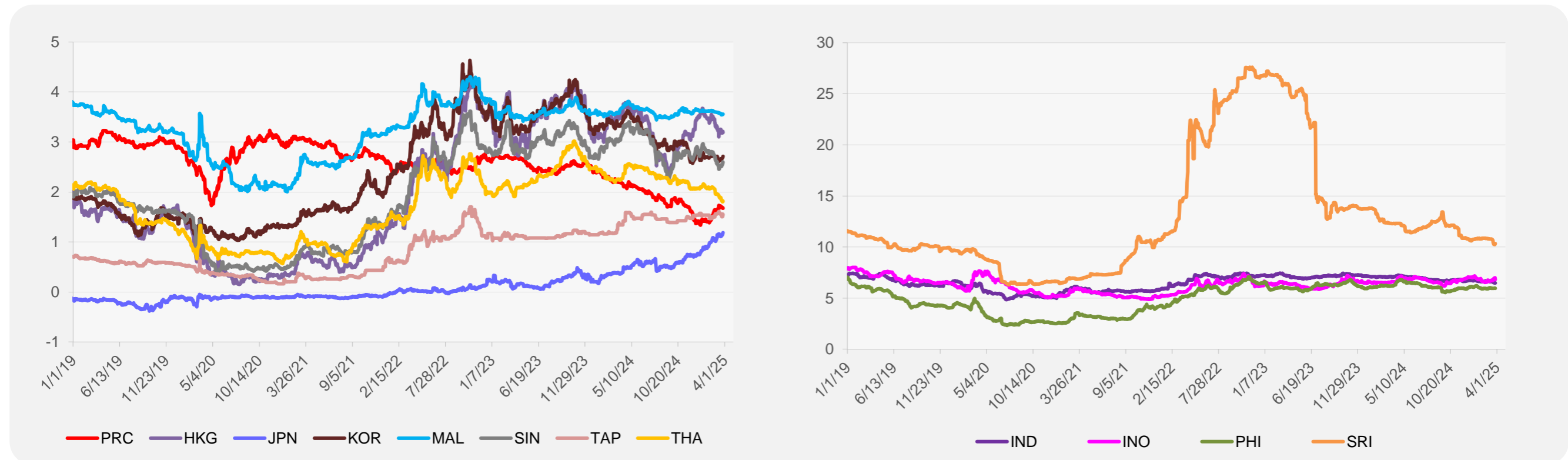
<sup>1</sup> Latest closing price from 19 March 2025.

<sup>2</sup> Singapore Exchange, Ribbed Smoked Sheet Rubber.

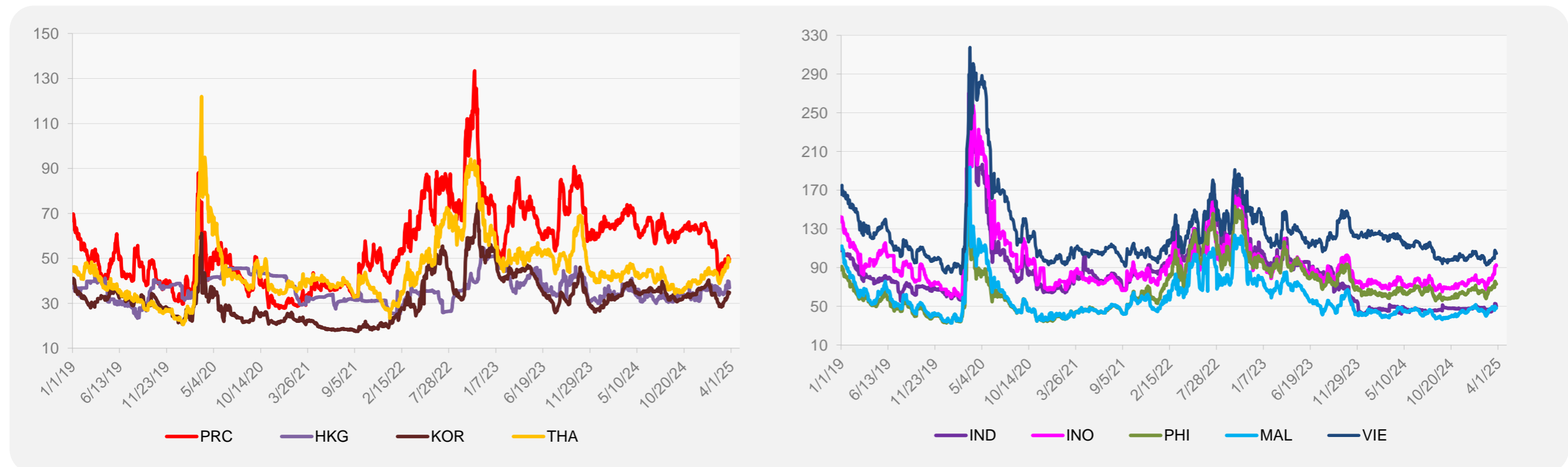


Source: ADB calculations using data from Bloomberg.

### 5-YEAR LOCAL CURRENCY GOVERNMENT BOND YIELDS (%)



### 5-YEAR CREDIT DEFAULT SWAP<sup>1</sup>



<sup>1</sup> In USD and based on sovereign bonds.  
Source: ADB calculations using data from Bloomberg.